

DESCRIPTION

This is an indoor/outdoor housing that can accommodate camera/lens combinations up to 10.5" long and 3.6" wide. The body is an attractive white finish with black end caps. The outdoor model includes climate controlled blower, heater and defogger.

KEY FEATURES

- Side hinge for easy access when servicing
- Accepts many lens and camera combinations
- Designed to meet IP65 standards
- Steel bracket wall mount included
- Includes climate controlled blower, heater and defogger (EE-ENC-16001)

ENVIRONMENTAL SPECIFICATIONS (EE-ENC-16001)

Operating Temperature	-20° F to 120° F (-29° C to 49° C)
Heater Activates at	50° F, ± 8° F (10° C, ± 8° C)
Heater Deactivates at	80° F, ± 8° F (27° C, ± 5° C)
Blower Activates at	110° F, ± 7° F (44° C, ± 7° C)
Blower Deactivates at	80° F, ± 6° F (27° C, ± 6° C)
Operating Humidity	Up to 100%

MECHANICAL SPECIFICATIONS

Max Camera Length	10.5" / 266.7mm
Mount / Bracket Construction	Machined & cast aluminum
Weight	4 lbs / 1.8 kg
Body Construction	Aluminum Top Polycarbonate with paint shield Faceplate
Size (Wall Mount)	5.36" x 5.67" x 15.25" (136.1mm x 144.1mm x 387.4mm)

Indoor/Outdoor Fixed Enclosure

EE-ENC-13101

EE-ENC-16001



AVAILABLE MODELS

- EE-ENC-13101: Indoor Wall Mount Clear Lens
- EE-ENC-16001: Outdoor Wall Mount Clear Lens

OPTIONAL ACCESSORIES

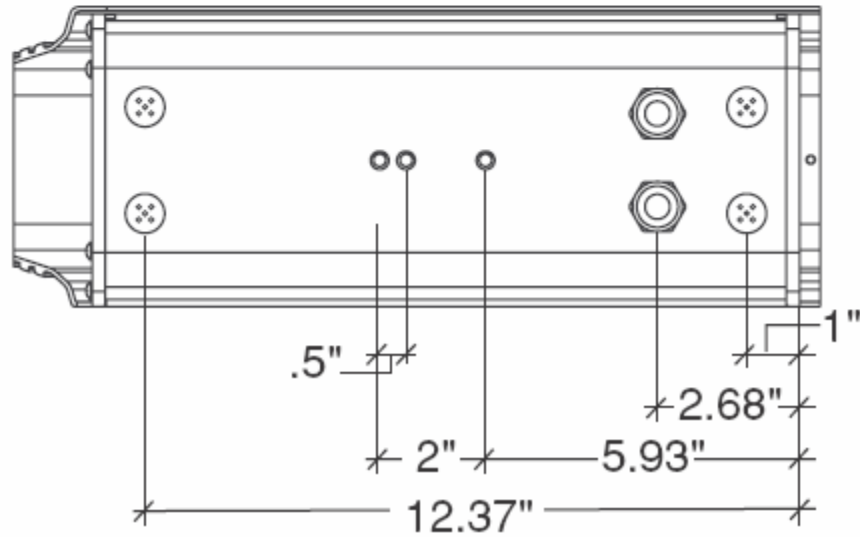
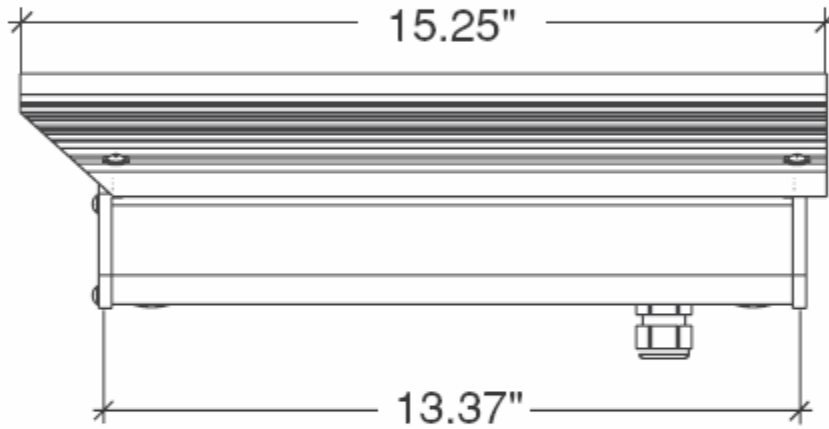
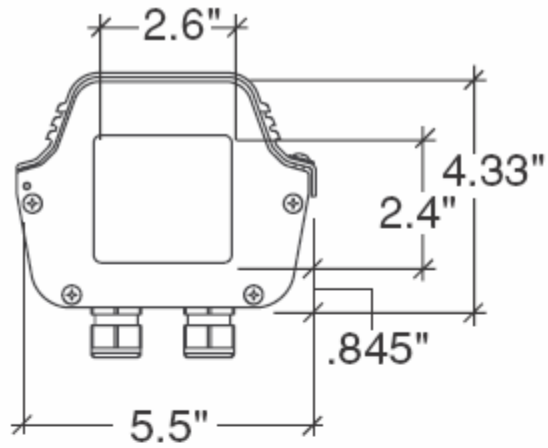
- EE-ENC-19001: Corner Mount Adapter Bracket
- EE-ENC-19002: Pole Mount Adapter Bracket

All aluminum construction and a durable powder coat finish, 75 lb rating, and threaded bold inserts for quick and easy installation.

ELECTRICAL SPECIFICATIONS (EE-ENC-16001)

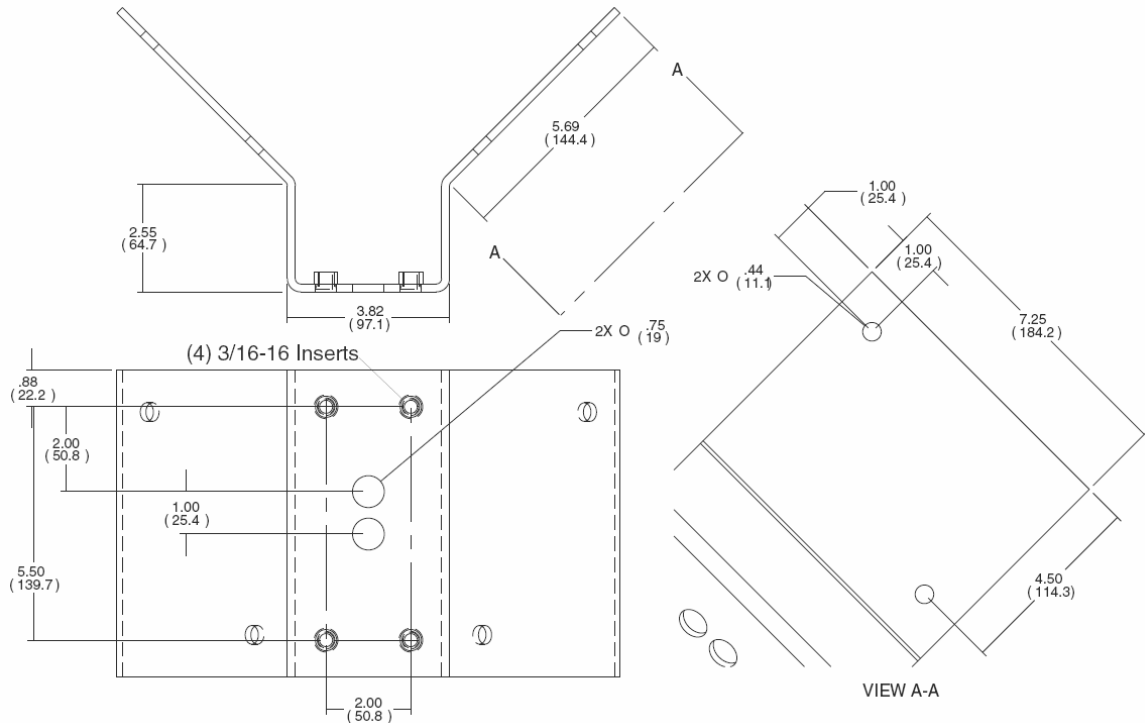
Input Voltage	24 VAC
Power Consumption	Heater: 25 vA (25 watts) Blower: 1.4 vA (2 watts)
Output Power (for camera)	24 VAC to 12VDC power support for camera

Smarter Surveillance

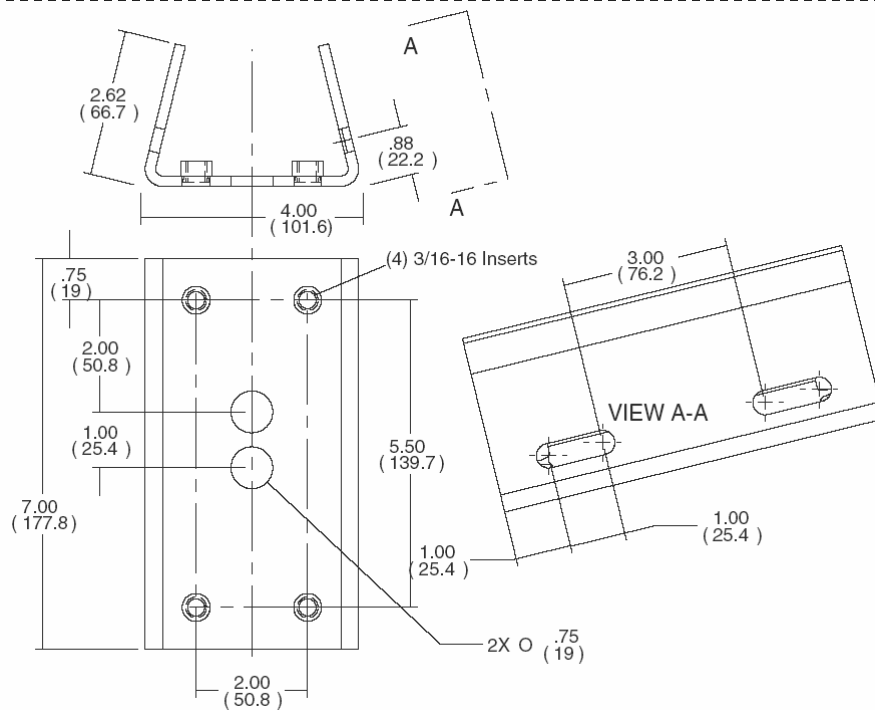


Architectural Drawing

Smarter Surveillance



Optional Pole Mount Adapter Bracket – EE-ENC-19002



Optional Corner Mount Adapter Bracket – EE-ENC-19001

Smarter Surveillance