



**NVR Remote Client**  
**EE-NVR-12000 - 5 clients**  
**EE-NVR-13000 - 10 clients**

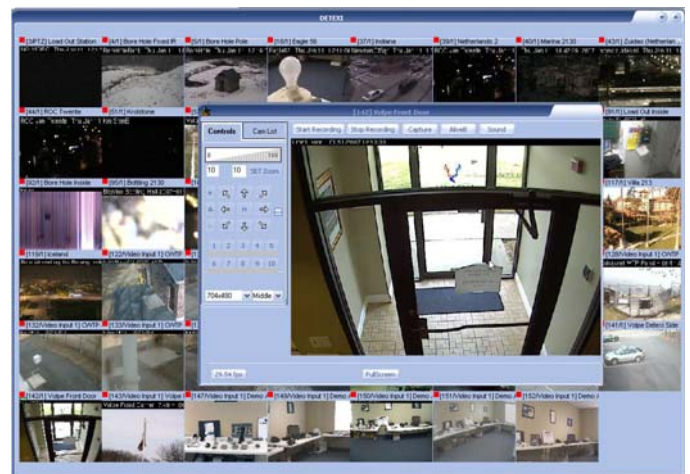
**Description**

The DETEXI NVR Client is a license free software module that is installed on any computer. The licensing is done in the NVR server, so the number of available simultaneous clients depends on the number of clients that have been purchased.

An Eagle Eye Detexi client has the ability to remotely access multiple Eagle Eye Detexi NVR servers, as well as the ability to manually view archived video.

**Key Features**

- Capable of storing multiple NVR server connection definitions, providing the user with server choice at login.
- Capable of viewing and controlling several hundred cameras simultaneously depending on the bandwidth available.
- Bandwidth management tools with user selectable resolution and compression.
- Unique dynamic “re-tiling” capabilities allow the display to properly fit as many cameras as selected, as well as user selectable tiling patterns available for viewing customization.
- User monitoring features allow users on different clients to see each other, as well as communicate with each other instant text messaging. The master user also has the ability to force a disconnect on any other client connections.
- Visual mapping capabilities, allowing for single or multi-camera selection based on geographic location.
- Can receive alarm messages from the NVR Server with the ability of bringing up the application and camera in alarm as the focus.
- Capable of running in silent mode (with an icon in the system tray), allowing for silent automatic launch on system startup in order to be available for messages and commands from the NVR server.
- Capable of capturing still images and/or recording live video and storing locally on the client computer (MJPEG or AVI) independent of the server computer.
- Position presets for PTZ cameras can be defined and used in the client.
- Adjustable 2-way audio capabilities within the camera client controls.
- The ability to interrupt PTZ camera tours for manual control of the cameras.
- Selectable user-specific groups of cameras (as defined in the NVR user settings) for ease of viewing and customization.
- Automatic login option.
- The ability to control outputs (or relays) built into the cameras.



**System Requirements**

**Viewing up to 32 cameras**

- Pentium IV 2.8 GHz processor
- 1 GB – 400 MHz DDR2 RAM
- 256 MB PCI-E video card
- SATA II A/V hard drive
- Windows XP Professional

**Viewing above 32 cameras**

- Dual core 3.4 GHz processor
- 2 GB – 667 MHz DDR2 RAM
- 512 MB PCI-E video card
- SATA II A/V hard drive
- Windows XP Professional

**Optional Add-on Modules**

- **NVR Startup Assistance**  
On site startup assistance with system configuration and training
- **Birds Eye View**  
Discover, map out, and manage your network topology for easy network management and troubleshooting

*Connection – Detection - Response*